



การสัมมนาการจัดการทุนสนับสนุนมูลนิธิโรตารี

GRANT MANAGEMENT SEMINAR

10 พฤษภาคม 2567 โรงแรมริเวอร์ จังหวัดนครปฐม



ภาพรวมทุนสนับสนุนโรตารี และ การให้ทุนของมูลนิธิ ROTARY GRANT OVERVIEW & FOUNDATION FUNDING

โดย อพภ.อรชร สายสีทอง – ผู้ช่วยผู้ประสานงานมูลนิธิโรตารี โซน 10B

PDG.Orachorn Saisrithong – Assistant Regional Rotary Foundation Coordinator (ARRFC), Zone 10B

10 พฤษภาคม 2567 โรงแรมริเวอร์ จังหวัดนครปฐม

ROTARY GRANTS

ทุนสนับสนุนโรตารี





WHAT KIND OF FUNDING IS AVAILABLE?

ROTARY GRANTS HELP PROVIDE FUNDING FOR PROJECTS. AS A MEMBER OF ROTARY AND ROTARACT CLUB, YOU HAVE ACCESS TO FOUR GRANT TYPES:

DISTRICT GRANT

- Addresses needs in your community aligned with The Rotary Foundation's mission
- For flexible, short-term activities

GLOBAL GRANT

- Supports large international and sustainable projects based on a locally identified need
- For long-term projects, graduate-level scholarships, and vocational training teams

DISASTER RESPONSE GRANT

- Helps support relief and recovery efforts in affected areas
- For short-term activities focused on recovery

PROGRAMS OF SCALE GRANT

- Impacts a large number of people or a broad geographic area
- For longer-term interventions that address a regionally significant issue



DISTRICT GRANTS

FUNDING FOR: Small-scale, short-term project activities

PURPOSE: To address needs in your community and communities abroad

REQUIREMENT(S): Aligns with the **mission** of The Rotary Foundation

HOW THEY WORK: Each district chooses which activities it will fund with these grants. Districts can spend up to 50% of their District Designated Fund (DDF) to receive one district grant annually.

ทุนสนับสนุนระดับภาค

เงินทุนสำหรับ: กิจกรรมโครงการขนาดเล็กในระยะสั้น

วัตถุประสงค์: เพื่อตอบสนองความต้องการในชุมชนของคุณและชุมชนในต่างประเทศ

ข้อกำหนด: สอดคล้องกับพันธกิจของมูลนิธิโรตารี

วิธีการทำงาน: แต่ละภาคเลือกกิจกรรมที่จะให้ทุนสนับสนุนเหล่านี้ ภาคสามารถใช้จ่ายได้ถึง 50% ของกองทุนจัดสรรของภาค(DDF) เพื่อรับทุนสนับสนุนระดับภาคหนึ่งทุนต่อปี

เงินทุนสำหรับ: โครงการระยะยาว,ทุนการศึกษาในระดับปริญญาตรีหรือบัณฑิตศึกษา และทีมฝึกอบรมด้านอาชีพ

วัตถุประสงค์: เพื่อสนับสนุนกิจกรรมระหว่างประเทศขนาดใหญ่ ที่มีความที่ยั่งยืนและวัดผลได้ เพื่อตอบสนองความต้องการที่ระบุในชุมชนท้องถิ่น

ข้อกำหนด: โครงการจะต้องสอดคล้องกับเรื่องที่น่าให้ความสำคัญของโรตารีอย่างน้อยหนึ่งเรื่อง

วิธีการทำงาน: ด้วยงบประมาณขั้นต่ำ \$30,000 สโมสรและภาคสามารถใช้ทั้ง DDF และเงินสดบริจาคสำหรับโครงการ โดยกองทุนโลกของมูลนิธิโรตารีจะสมทบทุนให้การบริจาค DDF ให้โครงการ (แต่ไม่ใช่เงินสด) และมอบเงินทุนทั้งหมดนั้นให้กับสโมสรหรือภาคที่อุปถัมภ์โครงการ กองทุนโลกสามารถสมทบทุนได้สูงสุด \$400,000 โดยไม่มีขั้นต่ำ

ทุนสนับสนุนระดับโลก

GLOBAL GRANTS



FUNDING FOR: Long-term projects, graduate-level scholarships, and vocational training teams

PURPOSE: To support large-scale international activities with sustainable, measurable outcomes in response to a locally identified need

REQUIREMENT(S): The project must align with one of Rotary's areas of focus.

HOW THEY WORK: With a minimum budget of \$30,000, clubs and districts can use both District Designated Funds (DDF) and cash contributions for a global grant project. The Rotary Foundation World Fund then matches DDF contributions (but not cash contributions) and awards that money to the sponsoring clubs. The World Fund provides a minimum match of \$15,000 and a maximum of \$400,000.



ทุนเพื่อตอบสนอง ต่อภัยพิบัติ

DISASTER RESPONSE GRANTS

FUNDING FOR: Short-term activities focused on recovery

PURPOSE: To support relief and recovery efforts in areas that have been affected by a natural disaster.

REQUIREMENT(S): Districts should work closely with local officials to ensure that the funding will meet a specific community need.

HOW THEY WORK: Districts in an affected area or country may apply for a maximum grant of \$25,000, based on the availability of funds. They can apply for subsequent grants after they successfully report the outcomes from their previous grants.

เงินทุนสำหรับ: กิจกรรมระยะสั้น มุ่งเน้นไปที่การฟื้นฟู

วัตถุประสงค์: เพื่อสนับสนุนความพยายามในการบรรเทาทุกข์ และการฟื้นฟูในพื้นที่ที่ได้รับผลกระทบจากภัยพิบัติทางธรรมชาติ

ข้อกำหนด: ภาครัฐทำงานอย่างใกล้ชิดกับเจ้าหน้าที่ท้องถิ่นเพื่อให้แน่ใจว่าเงินทุนจะสนองความต้องการเฉพาะของชุมชน

วิธีการทำงาน: ภาครัฐในพื้นที่หรือประเทศที่ได้รับผลกระทบอาจยื่นขอเงินช่วยเหลือสูงสุด \$25,000 ขึ้นอยู่กับความพร้อมของเงินทุน พวกเขาจะสามารถสมัครขอรับทุนสนับสนุนครั้งต่อไปได้หลังจากที่ส่งรายงานผลจากทุนก่อนหน้านี้เรียบร้อยแล้ว

เงินทุนสำหรับ: โครงการระยะยาว
ที่แก้ไขปัญหาที่สำคัญในระดับภูมิภาค

วัตถุประสงค์: เพื่อประโยชน์ของผู้
คนจำนวนมากหรือพื้นที่ทางภูมิศาสตร์
ที่สำคัญ

ข้อกำหนด: เป็นกิจกรรมที่ต้องมีความยั่งยืนและอิง
หลักฐานเชิงประจักษ์พร้อมผลลัพธ์และผลกระทบที่
วัดได้และยั่งยืน และสอดคล้องกับเรื่องที่เน้น
ความสำคัญของโรตารีหนึ่งเรื่องหรือมากกว่า

วิธีการทำงาน: โครงการทุนสนับสนุน Programs
of Scale เป็นทุนสนับสนุนที่มีการแข่งขัน ที่
ออกแบบมาเพื่อตอบสนองความต้องการของชุมชน
ในแต่ละปีจะมีเพียงหนึ่งโครงการที่ได้รับการอนุมัติ
ในจำนวนทุน \$2 ล้าน จากมูลนิธิโรตารี ผู้สมัคร
โครงการต้องทำงานโดยความร่วมมืออย่างเข้มข้น
กับองค์กรอื่นๆ



Programs of Scale Grants

FUNDING FOR: Long-term projects that address a regionally important issue

PURPOSE: To benefit a large number of people or a significant geographical area

REQUIREMENT(S): Activities must use sustainable, evidence-based intervention with measurable outcomes and impact, and align with one or more of Rotary's areas of focus.

HOW THEY WORK: Programs of scale grants are competitive grants designed to respond to a need that a community has identified. Each year, one approved project will receive \$2 million from The Rotary Foundation. Applicants are strongly encouraged to supplement Foundation funding with resources from multiple other sources.



MAKING A DIFFERENCE WITH ROTARY GRANTS

Rotary members around the world have access to different kinds of grants from The Rotary Foundation to support service projects, offer scholarships, and organize other activities that make a difference in their own communities and far away. Explore four grant options that can help turn your vision into reality.



MORE INFORMATION:
rotary.org/grants

	DISTRICT GRANTS	GLOBAL GRANTS	DISASTER RESPONSE GRANTS	PROGRAMS OF SCALE GRANTS
How do we use these?	These can address community needs in alignment with the Foundation's mission.	These support larger, international projects that align with an area of focus. They can also support scholarships and vocational training teams.	These support relief and recovery efforts in communities affected by natural disasters. They can be used to provide basic items like water, food, medicine, and clothing.	These competitive grants allow Rotary members to work with experienced partners and expand proven activities that align with an area of focus to make a significant impact.
What's the time frame?	These are for short-term activities that have a limited scope.	Use these for longer-term, sustainable projects that address needs identified in a community assessment.	Your district works with local entities on relief or recovery activities within six months of a disaster.	These evidence-based, sustainable, and measurable programs are implemented over three to five years.
Do we need a partner?	No, but it's often a good idea to work with other local organizations.	You need to work with another club or district, either as the host sponsor or international sponsor.	No, but your district should collaborate with local organizations to meet critical needs.	You need to work with implementing and investment partners outside Rotary and should also collaborate with other Rotary entities.
Who can apply?	A district, which can distribute funds to clubs	Clubs and districts	A district	A club or district
Do we need to be qualified to apply for grants?	Your district needs to be qualified.	Both sponsors need to be qualified.	Your district needs to be qualified.	The club or district leading the program needs to be qualified.
What funding is available?	Your district can seek up to 50% of its District Designated Funds allocated for that year.	Global grants have a minimum project budget of US\$30,000. You can ask for up to US\$400,000 from the World Fund.	Districts can get up to US\$25,000 if the Disaster Response Fund has funds available.	One US\$2 million grant may be awarded each year. Sponsors need to secure US\$500,000 from one or more investment partners outside Rotary.
How and when do we apply?	Your district applies by 15 May of the Rotary year for which you're requesting funds. Your club applies to the district.	Clubs and districts can apply throughout the year.	Your district applies within six months of the disaster.	Your club or district submits a concept note by 1 August. Select programs are invited to develop a full proposal that is due in January of the following year.

เปรียบเทียบคุณสมบัติของทั้ง 4 รุ่นสนับสนุน โดยคำถามแยกเป็นข้อๆ

1. เราจะใช้ทุนนี้อย่างไร
2. มีกรอบเวลาอย่างไร
3. เราจำเป็นต้องมีพันธมิตรโครงการหรือไม่
4. ใครสามารถสมัครทุนสนับสนุนนี้ได้
5. เราจำเป็นต้องมีคุณสมบัติหรือไม่ในการสมัครทุนนี้
6. มีเงินทุนอะไรบ้าง
7. เราจะสมัครทุนนี้ได้อย่างไรและเมื่อไร

ศึกษาเพิ่มเติมได้ที่ **My Rotary**

2022-2023 GRANT SUMMARY

District grants

473 grants

\$26 m

Global grants

1,092 grants

\$55 m

Disaster

Response grants

324 grants

\$15 m

Program of
scale grants

1 grant

\$2 m

District 3330

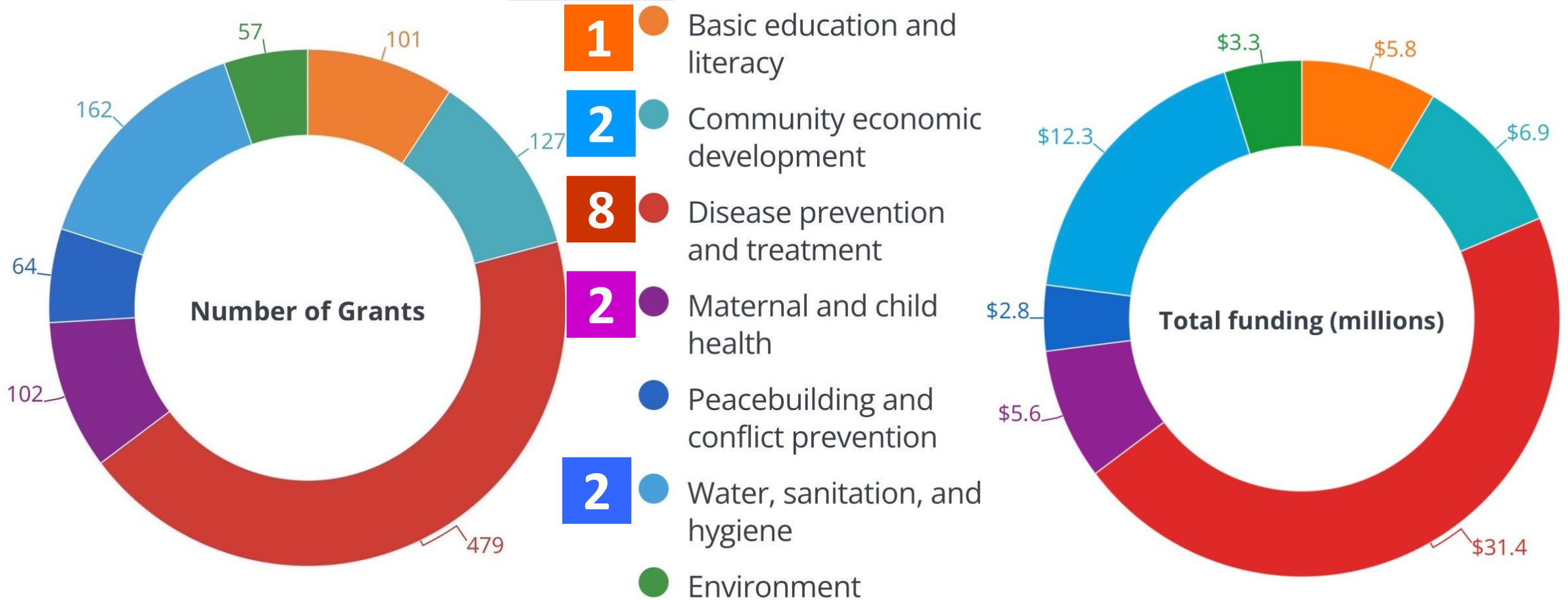
1 District grant = \$118,113

13 Global grants = \$895,580

(D3330-DDF = \$133,047)

2022-2023 GLOBAL GRANTS BY AREAS OF FOCUS

D3330





District Number: 3330

District Status:  Qualified

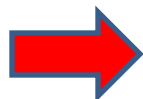
RESOURCES



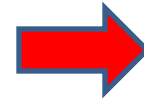
Rotary Grant Center

Welcome to Rotary grants! As Rotary members, we contribute our skills, expertise, and resources to solve some of the world's most serious problems. From providing clean water in local communities to promoting peace worldwide, Rotary grants can bring your project ideas to life.

www.rotary.org



My Rotary



Grant Center

GRANT RESOURCES

Questions about the grant process? We're here to help, from getting you started to final steps.

[Application Supplement for Microcredit Projects](#)

[Areas of Focus Policy Statements](#)

[Community Assessment Results](#)

[Cooperating Organization Memorandum of Understanding](#)

[Global Grant Application Template](#)

[Global Grant Calculator](#)

[Global Grant Lifecycle](#)

[Global Grant Monitoring and Evaluation Plan Supplement](#)

[Global Grant Report Template](#)

[Global Grant Scholarship Supplement](#)

[Grant Travel](#)

[Guide to Global Grants](#)

[Guidelines for Rotary Foundation-Funded Project Signage](#)

[How to Use the Grant Center](#)

[Report Supplement for Microcredit Projects](#)

[RI Exchange Rates](#)

[Rotary Grants Staff Contact Sheet](#)

[Six Steps to Sustainability](#)

[Terms and Conditions for Rotary Foundation Global Grants](#)

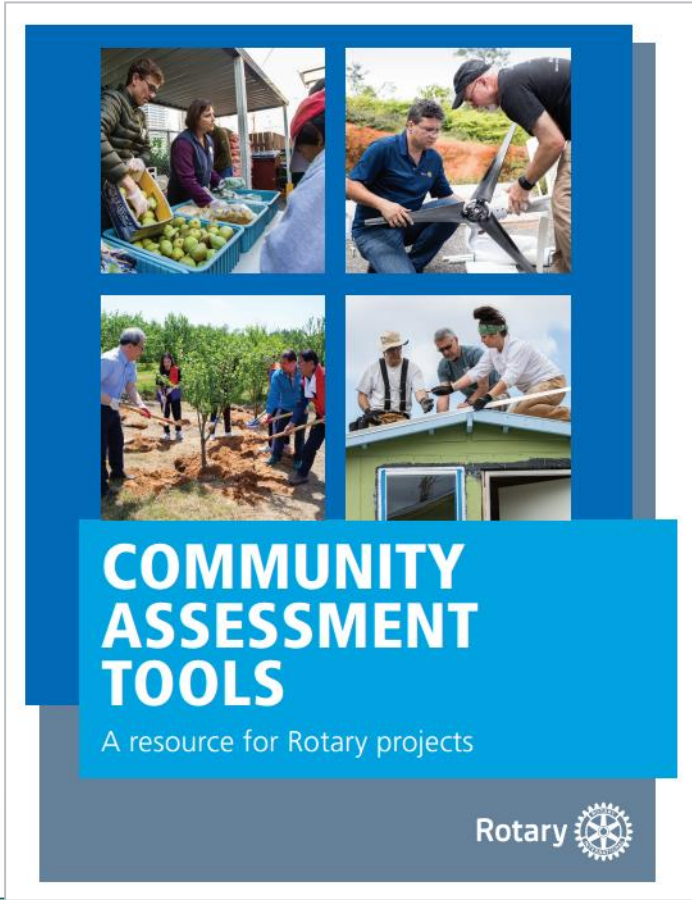
[Terms and Conditions for Rotary Foundation District Grants](#)

[Training Plan for Global Grants](#)

[Vocational Training Team Itinerary](#)

[Vocational Training Team Member Application](#)

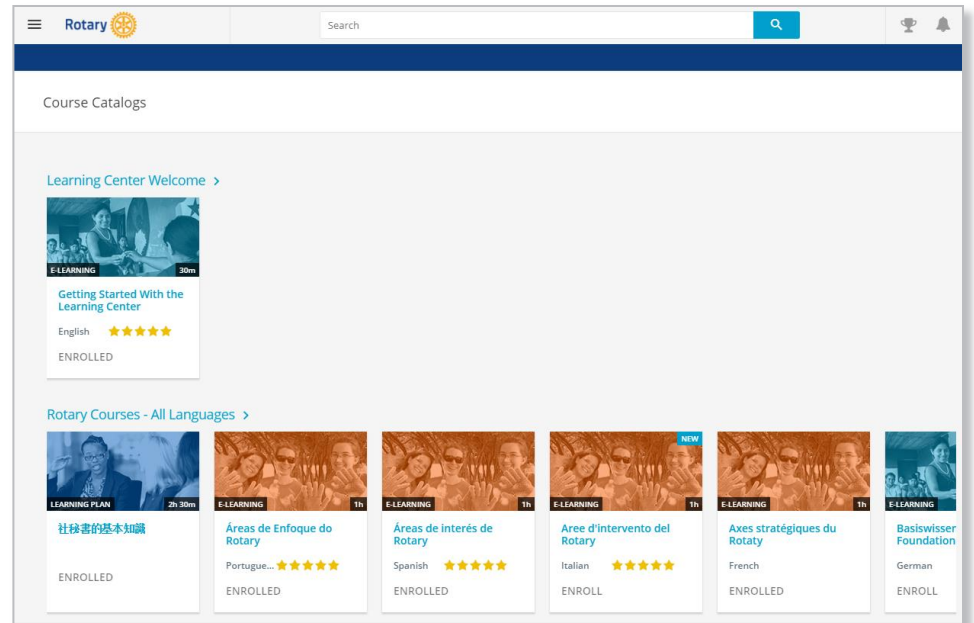
[Returning Grant Funds to The Rotary Foundation](#)



www.rotary.org My Rotary



www.rotarythailand.org



TERMS AND CONDITIONS

ข้อกำหนดและเงื่อนไข

One for Global Grants

สำหรับทุนสนับสนุนระดับโลก

One for District Grants

สำหรับทุนสนับสนุนระดับภาค

www.rotarythailand.org

www.rotary.org My Rotary

ENGLISH (EN)

Rotary 

TERMS AND CONDITIONS FOR ROTARY FOUNDATION GLOBAL GRANTS

Global grants fund large international activities that address needs in your community and communities around the world. These activities align with The Rotary Foundation's mission to help Rotary members advance world understanding, goodwill, and peace by improving health, providing quality education, improving the environment, and alleviating poverty. Districts decide which activities they want to support with district grants.

The Rotary Foundation may modify these terms and conditions at any time to clarify them or to reflect policy changes. Changes made as of January 2024:

- Addition of information about reporting requirements
- Clarification that restrictions on ineligible activities and expenses apply to all grants
- Addition of information about reporting requirements
- Clarification about who may submit a grant application
- Clarification that receipts must be submitted with the final report (see section 8, Reporting Requirements)
- An explanation that interest earned on canceled grants is not eligible for funding
- Clarification about Rotary's policy on gifts and donations
- Clarification about Rotary's Co-Funding Policy for Grants

You can find additional updates and resources, including the [Terms and Conditions for Rotary Foundation Global Grants](#), at rotary.org/grants.

ENGLISH (EN)

Rotary 

TERMS AND CONDITIONS FOR ROTARY FOUNDATION DISTRICT GRANTS

District grants fund small-scale, short-term activities that address needs in your community and communities around the world. These activities align with The Rotary Foundation's mission to help Rotary members advance world understanding, goodwill, and peace by improving health, providing quality education, improving the environment, and alleviating poverty. Districts decide which activities they want to support with district grants.

The Rotary Foundation may modify these terms and conditions at any time to clarify them or to reflect policy changes. One change is being made as of January 2024:

- Explaining that for grants paid to districts in Brazil, a donation certificate needs to be submitted with the final report (see section 8, Reporting Requirements)

You can find additional updates and resources, including the [Terms and Conditions for Rotary Foundation Global Grants](#), at rotary.org/grants or ask for them from [Rotary grants staff](#).

1. ELIGIBLE ACTIVITIES

Activities that are eligible for district grant funding:

- A. Align with The Rotary Foundation's mission
- B. Can include:
 1. Local or international service projects and related travel
 2. Scholarships for any educational level
 3. Vocational training teams (groups of professionals who teach others about a particular field or learn more about their own) and related travel
 4. Scholar and vocational training team orientation
 5. Grant management seminars
 6. Rotary members' participation in, and travel to and from, Rotary project fairs, to help clubs and districts find project partners
 7. Projects and activities in countries where Rotary has clubs as well as in areas where we do not, and in geographic areas where permitted by law and in accordance with Foundation policies
 8. [Rotary Youth Exchange](#), [RYLA](#), [Rotary Friendship Exchange](#), [Rotaract](#), [Interact](#), and [New Generations Service Exchange](#) programs

Terms and Conditions for Rotary Foundation District Grants (January 2024)

1

Areas of Focus Policy Statement

ถ้อยแถลงนโยบาย เรื่องที่เน้น
ความสำคัญ

www.rotarythailand.org

www.rotary.org My Rotary



AREAS OF FOCUS POLICY STATEMENTS

The Rotary Foundation (TRF) strives to process grants efficiently and ensure the quality of grant-funded projects. In each policy statement, you'll find lists of eligible and ineligible activities, including examples of the types of projects that Rotary clubs and districts have successfully implemented. All grant requests must comply with the policy statement related to their intended area of focus. Project planning is the responsibility of the host club or district.

PEACEBUILDING AND CONFLICT PREVENTION

Rotary supports training, education, and practices related to peacebuilding and conflict prevention through initiatives that help transform conflict in our communities and around the world.

Area of Focus Statement of Purpose and Goals

TRF enables Rotarians to advance peacebuilding and prevent conflict by:

1. Enhancing the capacity of individuals and communities to transform conflict and build peace
2. Training community members in peace education, peace leadership, and conflict prevention and resolution
3. Providing services that help integrate vulnerable populations into society
4. Improving dialogue and community relations to determine how best to manage natural resources
5. Funding graduate scholarships for career-minded professionals related to peacebuilding and conflict prevention

Parameters for Eligibility

TRF considers the following activities to be within the scope of the peacebuilding and conflict prevention area of focus:

1. Group activities including workshops, trainings, and other programs that support peace leadership and education, Positive Peace,² community integration of vulnerable populations,



¹ Conflict transformation involves identifying and working with the underlying conditions, relationships, and social structures that give rise to conflict. Through this process, one moves beyond conflict resolution or management to change the environment that has led to conflict. This focus on transformation helps ensure sustainable peace.

² Rotary has a strategic partnership with the Institute for Economics and Peace to help address the underlying causes of conflict and create conditions that foster peace. [Learn more](#) about our work in Positive Peace.

AREAS OF FOCUS GUIDELINES

แนวทางเรื่องที่เน้นความสำคัญของโรตารี

www.rotary.org My Rotary

<p>Rotary </p> <h3>BASIC EDUCATION AND LITERACY GUIDELINES FOR GLOBAL GRANT FUNDING</h3> <p>These comprehensive guidelines are for Rotary members who want to apply for a global grant from the Rotary Foundation to support basic education and literacy activities. You can use the links below to go directly to the section you're most interested in, but we encourage you to read the whole document for a full understanding of the guidelines before you apply for a grant.</p> <p>WHAT ARE THE ROTARY FOUNDATION'S GOALS FOR BASIC EDUCATION AND LITERACY?</p> <p>HOW DO I CONDUCT A COMMUNITY ASSESSMENT FOR BASIC EDUCATION AND LITERACY?</p> <p>HOW DO I MAKE MY PROJECT IN BASIC EDUCATION AND LITERACY SUSTAINABLE?</p> <p>WHAT TYPES OF PROJECTS AND ACTIVITIES ARE ELIGIBLE FOR GLOBAL GRANT FUNDING?</p> <ul style="list-style-type: none">• Early childhood education• Teacher training• Teaching students with disabilities• Libraries• Language training• After-school or tutoring programs• Technology projects <p>WHAT TYPES OF PROJECTS AND ACTIVITIES AREN'T ELIGIBLE FOR GLOBAL GRANT FUNDING?</p> <p>HOW DO I MONITOR AND EVALUATE A PROJECT IN BASIC EDUCATION AND LITERACY?</p> <p>HOW DO I SUPPORT A SCHOLAR IN BASIC EDUCATION AND LITERACY?</p> <p>WHERE CAN I FIND MORE INFORMATION?</p> <p><small>Basic Education and Literacy Guidelines for Global Grant Funding (August 2022)</small></p>	<p>Rotary </p> <h3>COMMUNITY ECONOMIC DEVELOPMENT GUIDELINES FOR GLOBAL GRANT FUNDING</h3> <p>These comprehensive guidelines are for Rotary members who want to apply for a global grant from the Rotary Foundation to support community economic development activities. You can use the links below to go directly to the section you're most interested in, but we encourage you to read the whole document for a full understanding of the guidelines before you apply for a grant.</p> <p>WHAT ARE THE ROTARY FOUNDATION'S GOALS FOR COMMUNITY ECONOMIC DEVELOPMENT?</p> <p>HOW DO I CONDUCT A COMMUNITY ASSESSMENT FOR COMMUNITY ECONOMIC DEVELOPMENT?</p> <p>HOW DO I MAKE MY PROJECT IN COMMUNITY ECONOMIC DEVELOPMENT SUSTAINABLE?</p> <p>WHAT TYPES OF PROJECTS AND ACTIVITIES ARE ELIGIBLE FOR GLOBAL GRANT FUNDING?</p> <ul style="list-style-type: none">• Vocational training• Social enterprises or startups• Microcredit• Agriculture• Renewable energy for economic growth• Community-based adaptations• Empowering marginalized communities• Emergency preparedness• Adopt-a-village <p>WHAT TYPES OF PROJECTS AND ACTIVITIES AREN'T ELIGIBLE FOR GLOBAL GRANT FUNDING?</p> <p>HOW DO I MONITOR AND EVALUATE A PROJECT IN COMMUNITY ECONOMIC DEVELOPMENT?</p> <p>HOW DO I SUPPORT A SCHOLAR IN COMMUNITY ECONOMIC DEVELOPMENT?</p> <p>WHERE CAN I FIND MORE INFORMATION?</p> <p><small>Community Economic Development Guidelines for Global Grant Funding (August 2022)</small></p>	<p>Rotary </p> <h3>DISEASE PREVENTION AND TREATMENT GUIDELINES FOR GLOBAL GRANT FUNDING</h3> <p>These comprehensive guidelines are for Rotary members who want to apply for a global grant from the Rotary Foundation to support disease prevention and treatment activities. You can use the links below to go directly to the section you're most interested in, but we encourage you to read the whole document for a full understanding of the guidelines before you apply for a grant.</p> <p>WHAT ARE THE ROTARY FOUNDATION'S GOALS FOR DISEASE PREVENTION AND TREATMENT?</p> <p>HOW DO I CONDUCT A COMMUNITY ASSESSMENT FOR DISEASE PREVENTION AND TREATMENT?</p> <p>HOW DO I MAKE MY PROJECT IN DISEASE PREVENTION AND TREATMENT SUSTAINABLE?</p> <p>WHAT TYPES OF PROJECTS AND ACTIVITIES ARE ELIGIBLE FOR GLOBAL GRANT FUNDING?</p> <ul style="list-style-type: none">• Prevention and control of communicable diseases• Prevention and control of noncommunicable diseases• Vaccination• Mental health and substance abuse• Mobile health vehicles and clinics• Emergency services support• Medical equipment projects• Health fairs and general health screenings• Disability-related projects• Autism spectrum disorder projects• Vision and eye care projects• Medical devices and lifesaving surgeries• Establishing independent Rotary health care facilities <p>WHAT TYPES OF PROJECTS AND ACTIVITIES AREN'T ELIGIBLE FOR GLOBAL GRANT FUNDING?</p> <p>HOW DO I MONITOR AND EVALUATE A PROJECT IN DISEASE PREVENTION AND TREATMENT?</p> <p>WHERE CAN I FIND MORE INFORMATION?</p> <p><small>Disease Prevention and Treatment Guidelines for Global Grant Funding (August 2022)</small></p>	<p>Rotary </p> <h3>ENVIRONMENT GUIDELINES FOR GLOBAL GRANT FUNDING</h3> <p>These comprehensive guidelines are for Rotary members who want to apply for a global grant from the Rotary Foundation to support environmental activities. You can use the links below to go directly to the section you're most interested in, but we encourage you to read the whole document for a full understanding of the guidelines before you apply for a grant.</p> <p>WHAT ARE THE ROTARY FOUNDATION'S OBJECTIVES FOR ENVIRONMENTAL ACTIVITIES?</p> <p>HOW DO I CONDUCT A COMMUNITY ASSESSMENT FOR ENVIRONMENTAL ACTIVITIES?</p> <p>HOW DO I MAKE MY ENVIRONMENTAL PROJECT SUSTAINABLE?</p> <p>WHAT TYPES OF PROJECTS AND ACTIVITIES ARE ELIGIBLE FOR GLOBAL GRANT FUNDING?</p> <ul style="list-style-type: none">• Hands-on conservation• Community natural resource governance and management• Agriculture, fishing, and primary production• Climate, energy, and electricity• Resilience and adaptation• Environmental education and communication• Material life cycles and circular economy• Environmental public health• Land use• Environmental innovation <p>WHAT TYPES OF PROJECTS AND ACTIVITIES AREN'T ELIGIBLE FOR GLOBAL GRANT FUNDING?</p> <p>HOW DO I MONITOR AND EVALUATE A PROJECT IN ENVIRONMENTAL ACTIVITIES?</p> <p>WHERE CAN I FIND MORE INFORMATION?</p> <p><small>Environment Guidelines for Global Grant Funding (August 2022)</small></p>	<p>Rotary </p> <h3>MATERNAL AND CHILD HEALTH GUIDELINES FOR GLOBAL GRANT FUNDING</h3> <p>These comprehensive guidelines are for Rotary members who want to apply for a global grant from the Rotary Foundation to support maternal and child health activities. You can use the links below to go directly to the section you're most interested in, but we encourage you to read the whole document for a full understanding of the guidelines before you apply for a grant.</p> <p>WHAT ARE THE ROTARY FOUNDATION'S GOALS FOR MATERNAL AND CHILD HEALTH?</p> <p>HOW DO I CONDUCT A COMMUNITY ASSESSMENT FOR MATERNAL AND CHILD HEALTH?</p> <p>HOW DO I MAKE MY PROJECT IN MATERNAL AND CHILD HEALTH SUSTAINABLE?</p> <p>WHAT TYPES OF PROJECTS AND ACTIVITIES ARE ELIGIBLE FOR GLOBAL GRANT FUNDING?</p> <ul style="list-style-type: none">• Vaccination projects• Mobile health vehicles and clinics• Emergency services support• Medical equipment projects• Nutrition projects• Medical devices and lifesaving surgeries• Health fairs and general health screenings <p>WHAT TYPES OF PROJECTS AND ACTIVITIES AREN'T ELIGIBLE FOR GLOBAL GRANT FUNDING?</p> <p>HOW DO I MONITOR AND EVALUATE A PROJECT IN MATERNAL AND CHILD HEALTH?</p> <p>HOW DO I SUPPORT A SCHOLAR IN MATERNAL AND CHILD HEALTH?</p> <p>WHERE CAN I FIND MORE INFORMATION?</p> <p><small>Maternal and Child Health Guidelines for Global Grant Funding (August 2022)</small></p>	<p>Rotary </p> <h3>PEACEBUILDING AND CONFLICT PREVENTION GUIDELINES FOR GLOBAL GRANT FUNDING</h3> <p>These comprehensive guidelines are for Rotary members who want to apply for a global grant from the Rotary Foundation to support peacebuilding and conflict prevention activities. You can use the links below to go directly to the section you're most interested in, but we encourage you to read the whole document for a full understanding of the guidelines before you apply for a grant.</p> <p>WHAT ARE THE ROTARY FOUNDATION'S GOALS FOR PEACEBUILDING AND CONFLICT PREVENTION?</p> <p>HOW DO I CONDUCT A COMMUNITY ASSESSMENT FOR PEACEBUILDING AND CONFLICT PREVENTION?</p> <p>HOW DO I MAKE MY PROJECT IN PEACEBUILDING AND CONFLICT PREVENTION SUSTAINABLE?</p> <p>WHAT TYPES OF PROJECTS AND ACTIVITIES ARE ELIGIBLE FOR GLOBAL GRANT FUNDING?</p> <ul style="list-style-type: none">• Preventing violence among youths• Educating communities about peace• Building Positive Peace• Preventing violence and conflict in families and youth• Increasing a community's peacebuilding capacity• Supporting refugees and immigrants• Easing conflict over natural and community resources• Integrating vulnerable populations• Preventing domestic and gender-based violence• Preventing human trafficking• More types of peacebuilding projects <p>WHAT TYPES OF PROJECTS AND ACTIVITIES AREN'T ELIGIBLE FOR GLOBAL GRANT FUNDING?</p> <p>HOW DO I MONITOR AND EVALUATE A PROJECT IN PEACEBUILDING AND CONFLICT PREVENTION?</p> <p>WHERE CAN I FIND MORE INFORMATION?</p> <p><small>Peacebuilding and Conflict Prevention Guidelines for Global Grant Funding (August 2022)</small></p>	<p>Rotary </p> <h3>WATER, SANITATION, AND HYGIENE GUIDELINES FOR GLOBAL GRANT FUNDING</h3> <p>These comprehensive guidelines are for Rotary members who want to apply for a global grant from the Rotary Foundation to support water, sanitation, and hygiene activities. You can use the links below to go directly to the section you're most interested in, but we encourage you to read the whole document for a full understanding of the guidelines before you apply for a grant.</p> <p>WHAT ARE THE ROTARY FOUNDATION'S GOALS FOR WATER, SANITATION, AND HYGIENE?</p> <p>HOW DO I CONDUCT A COMMUNITY ASSESSMENT FOR WATER, SANITATION, AND HYGIENE?</p> <p>HOW DO I MAKE MY PROJECT IN WATER, SANITATION, AND HYGIENE SUSTAINABLE?</p> <p>WHAT TYPES OF PROJECTS AND ACTIVITIES ARE ELIGIBLE FOR GLOBAL GRANT FUNDING?</p> <ul style="list-style-type: none">• Water supply• Water treatment or purification• Water resource management and watershed management• Wastewater management• Irrigation• WASH in Schools• Sanitation• Menstrual hygiene management• Market-based sanitation• Solid-waste management• Water, sanitation, and hygiene in health care facilities• Water, sanitation, and hygiene advocacy <p>WHAT TYPES OF PROJECTS AND ACTIVITIES AREN'T ELIGIBLE FOR GLOBAL GRANT FUNDING?</p> <p>HOW DO I MONITOR AND EVALUATE A PROJECT IN WATER, SANITATION, AND HYGIENE?</p> <p>WHERE CAN I FIND MORE INFORMATION?</p> <p><small>Water, Sanitation, and Hygiene Guidelines for Global Grant Funding (August 2022)</small></p>
---	---	---	--	---	---	--

เป้าหมายของมูลนิธิ, การประเมินชุมชน, ความยั่งยืน, โครงการประเภทใดที่มีสิทธิ์ได้รับทุน และประเภทใดที่ไม่เข้าเกณฑ์, การติดตามและประเมินผล, ทุนการศึกษา, และทรัพยากรอื่นๆ

การให้ทุนของมูลนิธิโรตารี

FOUNDATION FUNDING



The SHARE process



ปีนี้ภาคเราบริจาค
\$80,000
เข้ากองทุนประจำปี
— ระบบปันส่วน

Let's say your district donates \$80,000 to Annual Fund-SHARE in a given year. Here's what happens to those funds.

**For three
years**

**เงินบริจาคของเรา
ได้ถูกนำไปลงทุน
เป็นเวลา 3 ปี**



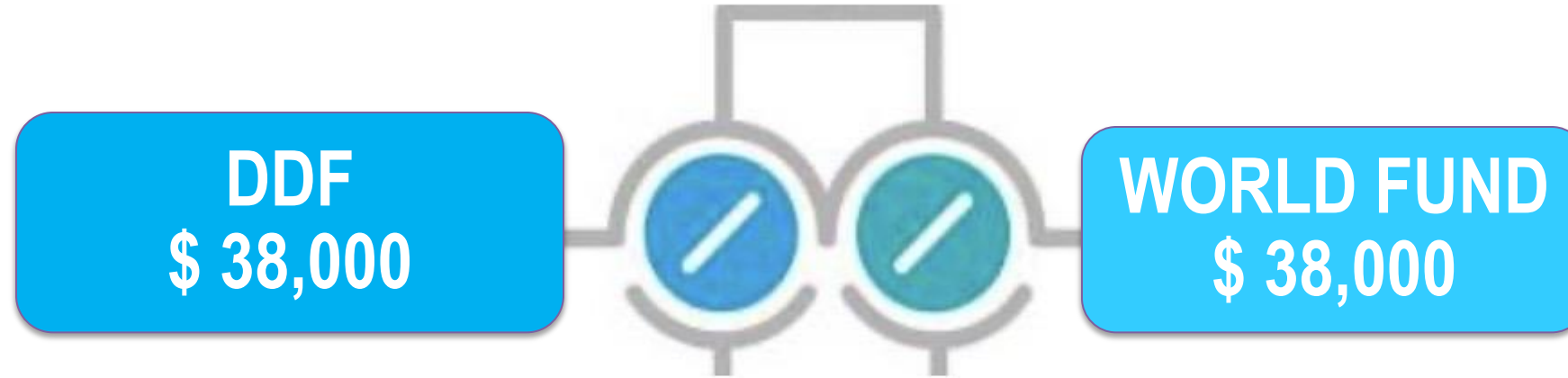
During this period, the funds are invested and the earnings help pay administrative and fund development costs. While this happens, your district can plan how to allocate the DDF that will become available.

หลังจาก 3 ปี 5% ของ
เงินบริจาค นำไปเป็น
ค่าใช้จ่ายในการดำเนิน
งานทุนสนับสนุน

5%

TRF use 5%
for operating
expenses.

After three years



Your original contribution, minus the first 5%, is split between the World Fund and District Designated Funds. Your district's available DDF is \$38,000 (half of the \$80,000 less 5% for operating expenses).

การนำทุนจัดสรรสำหรับภาคมาใช้

USE OF DDF





1

ข้อกำหนดในการที่มีคุณสมบัติของสโมสร CLUB QUALIFICATION

เข้าร่วมการสัมมนาการจัดการ
ทุนสนับสนุนมูลนิธิโรตารีภาค
ที่นครปฐม

10 พฤษภาคม 2567

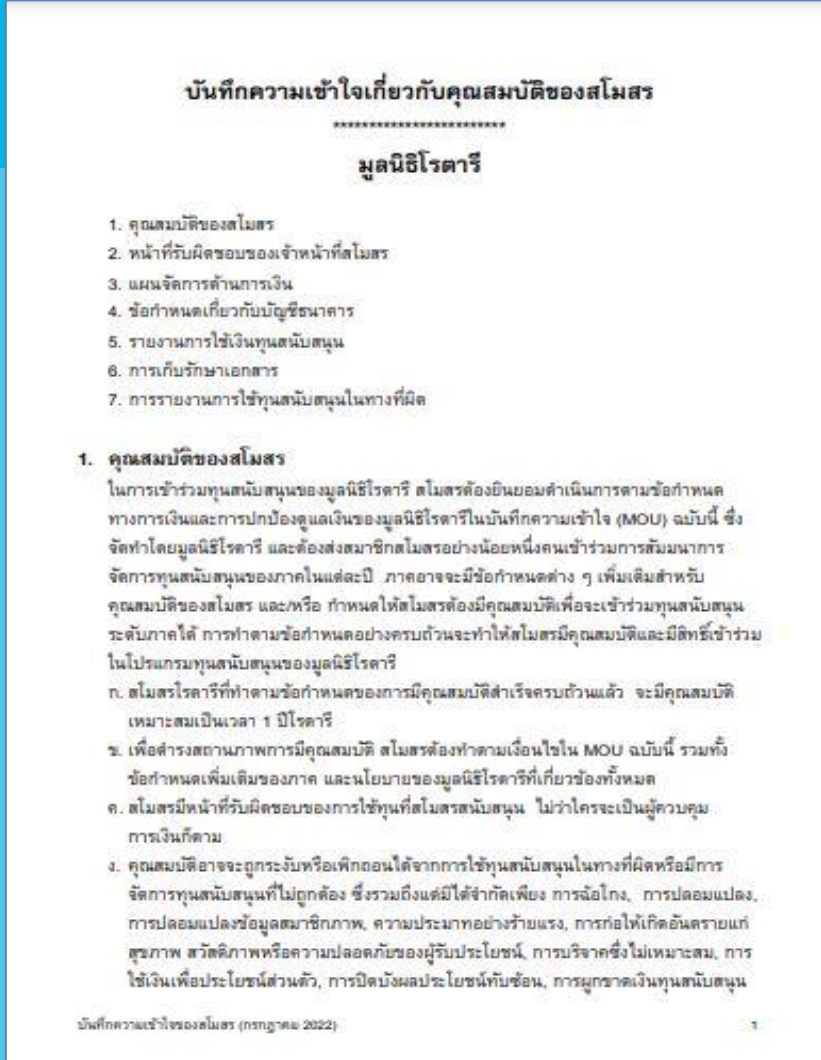
Attend District Grant
Management Seminar
Nakorn Pathom

10 May 2024



ข้อกำหนดในการที่มีคุณสมบัติของสโมสร CLUB QUALIFICATION

ส่งบันทึกความ
เข้าใจของสโมสร
(CLUB MOU)
ที่ลงนามแล้วให้
ภาค



Submit the Club
Memorandum of
Understanding
(MOU) to district





ข้อกำหนดในการที่มีคุณสมบัติของสโมสร CLUB QUALIFICATION

เข้าร่วมการสัมมนามูลนิธิ
โรตารีภาค (Club Vibrant
Workshop) ที่ราชบุรี
วันที่ 3 สิงหาคม 2567

Attend District Rotary Foundation
Seminar (Club Vibrant Workshop)
At Ratchaburi
3 August 2024

กระบวนการสมัคร ทุนสนับสนุน

เมื่อมีคุณสมบัติแล้วสโมสรและภาค
สามารถส่งใบสมัครขอรับทุน
สนับสนุนได้

GRANT APPLICATION PROCESS

Once they are qualified,
clubs and districts may
submit grant applications

สโมสรท่านอาจจะ
เลือกเอา **DDF** ไป
ใช้อย่างไรได้บ้าง

**HOW YOUR CLUB
MIGHT CHOOSE TO
SPEND ITS DDF?**

District grants

ทุนสนับสนุนระดับภาค

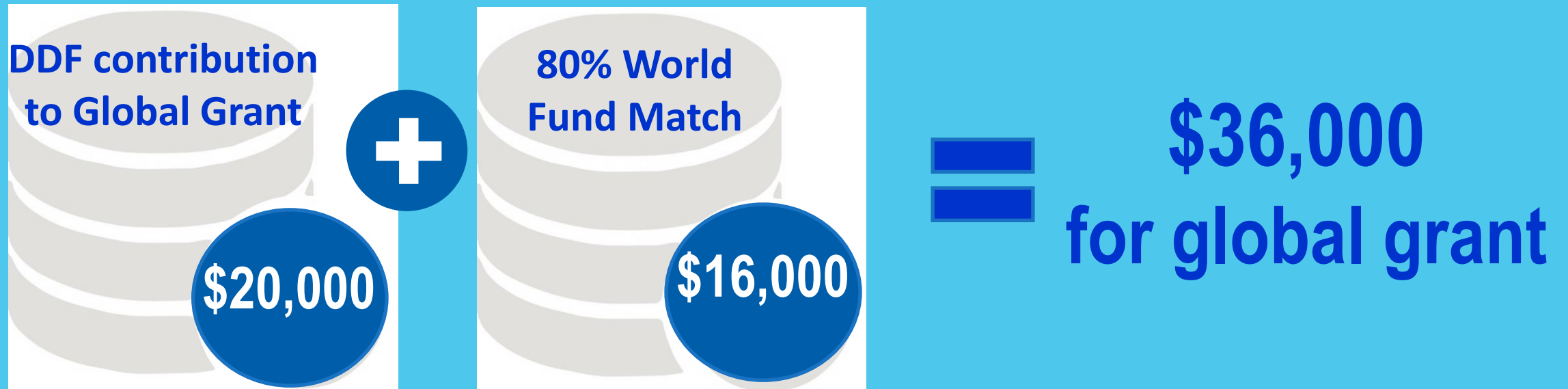
Global grants

ทุนสนับสนุนระดับโลก

Donations

บริจาค

WORLD FUND MATCH OF DDF TO 80% FOR GLOBAL GRANTS



DDF CONTRIBUTIONS TO POLIOPPLUS WILL BE MATCHED BY WORLD FUND AT 50%

DDF to
PolioPlus



50% World
Fund Match



Advocacy



\$90,000
for polio
eradication

**Bill & Melinda
Gate's Foundation**

LIMIT ROLLOVER DDF TO FIVE YEARS (1 JULY 2021 - 30 JUNE 2026)

Example scenario:

Y 1 Rollover

Y 2 Rollover

Y 3 Rollover

Y 4 Rollover

Y 5 Rollover

Item / Year

2020-21

2021-22

2022-23

2023-24

2024-25

2025-26

New DDF

\$50,000

\$50,000

\$50,000

\$50,000

\$50,000

Rollover DDF

\$20,000

\$30,000 = 20,000
+10,000

\$35,000 = 20,000
+10,000 + 5,000

\$35,000 = 20,000
+10,000 + 5,000

\$30,000 = 15,000
+10,000 + 5,000

DDF Spent

-\$40,000
(<\$50,000)

-\$45,000
(<\$50,000)

-\$50,000
(=\$50,000
=\$0)

-\$55,000
(>\$50,000
=\$5,000)

-\$60,000
(>\$50,000
=\$10,000)

Rollover Remaining

\$20,000

\$20,000
\$10,000

\$20,000
\$10,000
\$5,000

\$20,000 **
\$10,000
\$5,000
\$0

\$15,000 **
\$10,000
\$5,000
\$0
\$0

\$5,000 ***
\$10,000
\$5,000
\$0
\$0
\$0

Y 1 Rollover

Y 2 Rollover

Y 3 Rollover

Y 4 Rollover

Y 5 Rollover



หลังจาก 5 ปี เริ่ม 1 ก.ค. 2569 DDF ที่หมดอายุ ภาครสามารถบริจาคไปให้ที่
ไหนได้บ้าง.....? **After five years, starting from 1 July 2026, your
expiring DDF can be transferred at your district's choice to**

**Expiring
DDF**



**END
POLIO
NOW**

**Disaster
Response
Fund**

**Endowment
Funds**



WORLD FUND

**Expiring
DDF**

WORLD FUND

ถ้าภาคไม่เลือกที่จะบริจาค
DDF ที่หมดอายุไปที่ไหน
DDF นั้นก็จะถูกส่งไปที่....?

If you don't choose a
fund, the money will be
transferred to.. ?

QUESTIONS

Thank you 



For your attention!